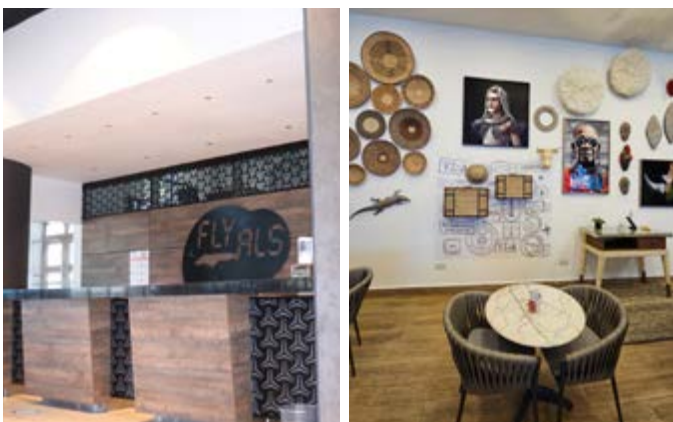




FLIGHT SCHEDULE

VALID: 1ST MARCH - 31ST DECEMBER 2024



WILSON | UKUNDA/DIANI | VIPINGO | MASAI MARA | AMBOSELI | TSAVO/TAITA |
KAMOK | MT KENYA | LOISABA | LEWA | SAMBURU | OLDONYO WUAS



ALS Limited, Wilson Airport
P. O. Box 41937 - 00100, Nairobi, Kenya



+254 701 382382 / 701 707777 / 702 978348



Res@flyals.com / Marketing@flyals.com



@flyals




@fly.als



www.flyals.com



Tailor made charters:  +254 727 666 222 / 709 078 000

 commercial@als.co.ke



FLIGHT SCHEDULE

VALID: 1ST MARCH - 31ST DECEMBER 2024

WILSON - AMBOSELI - WILSON								
				RACK RATES				NOTES
FROM	TO	DEP TIME	ARRIVAL TIME	FARES US\$	TAX	FARES US\$	TAX	
				ONE WAY		RETURN		
WILSON	AMBOSELI	7:00	7:45	185	16	310	32	<ul style="list-style-type: none"> Airstrips served: Amboseli/Selenkay/Kimana. Minimum 2 Pax per airstrip 4 pax to operate; Depending on loads, this service may occasionally fly from Amboseli direct to Masai Mara. Passengers on this service can connect to the Masai Mara/ Nanyuki/Loisaba/Lewa/ Samburu Timings are estimate and may vary depending on airrcfat routing.
AMBOSELI	WILSON	8:00	8:45	185	16	310	32	

WILSON - AMBOSELI - TSAVO - WILSON								
				RACK RATES				NOTES
FROM	TO	DEP TIME	ARRIVAL TIME	FARES US\$	TAX	FARES US\$	TAX	
				ONE WAY		RETURN		
WILSON	AMBOSELI	14:15	15:00	185	16	310	32	<ul style="list-style-type: none"> Airstrips served: Amboseli/Selenkay/Kimana Timings are estimates, depending on the number of airstrips that the aircraft will land on material date
AMBOSELI	WILSON	16:45	17:30	185	16	310	32	
WILSON	TSAVO	14:15	15:40	230	16	370	32	<ul style="list-style-type: none"> Airstrips Served - Finch hattons, Mwate, Taïta Hills, Voi, Oldonyo Wuas and Kilaguni Minimum 2pax per airstrip, 4 pax per service
TSAVO	WILSON	16:00	17:30	230	16	370	32	

WILSON - NANYUKI/SAMBURU/ LEWA/LOISABA - MARA								
				RACK RATES				NOTES
FROM	TO	DEP TIME	ARRIVAL TIME	FARES US\$	TAX	FARES US\$	TAX	
				ONE WAY		RETURN		
WILSON	NANYUKI	10:00	10:40	175	16	310	32	<ul style="list-style-type: none"> Airstrips served -Mt. Kenya Game Ranch, Nanyuki Civil and Nanyuki Kamok; Arrival timings are estimates and may vary depending on aircraft routing; Minimum 2pax per airstrip 4 pax to operate.
NANYUKI	WILSON	11:00	13:00	175	16	310	32	
NANYUKI	MARA	11:00	13:30	355	16			<ul style="list-style-type: none"> This service may occasionally route VIA Wilson and connects to Masai Mara at 1430 to arrive Mara at 1515.
WILSON	SAMBURU	10:00	11:30	235	16	415	32	<ul style="list-style-type: none"> Arrival timings are estimates and may vary depending on aircraft routing; Minimum 2 pax per airstrip 4 pax to operate; Airstrips served: Kalama/Buffalo/Oryx/ Saasab
SAMBURU	WILSON	11:20	13:00	235	16	415	32	
SAMBURU	MARA	11:20	13:30	415	16			<ul style="list-style-type: none"> This service may occasionally route VIA Wilson and connects to Masai Mara at 1430 to arrive Mara at 1515.



+254 701 382382 / 701 707777 / 702 978348

Timings are East African time (EAT), For T & Cs visit www.flyals.com
 Fares are subject to change by wrtten notice



FLIGHT SCHEDULE

VALID: 1ST MARCH - 31ST DECEMBER 2024

WILSON - NANYUKI/SAMBURU/ LEWA/LOISABA - MARA

FROM	TO	DEP TIME	ARRIVAL TIME	FARES US\$		TAX		
				ONE WAY	RETURN	FARES US\$	TAX	
WILSON	LEWA	10:00	11:00	245	16	415	32	<ul style="list-style-type: none"> • Arrival timings are estimates and may vary depending on aircraft routing • Minimum 2 pax per airstrip 4 pax to operate • Interline with Air Wilderness
LEWA	WILSON	11:15	13:00	245	16	415	32	
LEWA	MARA	11:15	13:30	415	16			
WILSON	LOISABA	10:00	11:15	240	16	415	32	<ul style="list-style-type: none"> • Arrival timings are estimates and may vary depending on aircraft routing • Minimum 2 pax per airstrip 4 pax to operate
LOISABA	WILSON	11:30	13:00	240	16	415	32	
LOISABA	MARA	11:30	13:30	415	16			<ul style="list-style-type: none"> • This service may occasionally route VIA Wilson and connects to Masai Mara at 1430 to arrive Mara at 1515.

WILSON - VIPINGO - UKUNDA - WILSON 3 X WEEKLY

Afternoon ONLY - (Friday/Sunday/Monday)

FROM	TO	DEP TIME	ARRIVAL TIME	RACK RATES				NOTES
				FARES US\$	TAX	FARES US\$	TAX	
				ONE WAY	RETURN			
WILSON	VIPINGO	14:30	15:40	200		400		<ul style="list-style-type: none"> • Timings may vary depending on flight routing. • This services operates with a minimum of six (6) passengers
VIPINGO	UKUNDA	16:00	16:20					
WILSON	UKUNDA	14:30	16:20	200		400		
UKUNDA	WILSON	16:40	17:50					

WILSON - MARA - WILSON 2 X DAILY

FROM	TO	DEP TIME	ARRIVAL TIME	RACK RATES				
				FARES US\$	TAX	FARES US\$	TAX	
				ONE WAY	RETURN			
WILSON	MARA	09:30	10:15	180	16	325	32	<ul style="list-style-type: none"> • Daily Service, minimum of 2 pax to operate (all airstrips including Cottars & Siana) • The flight into the Masai Mara drops and picks passengers from multiple airstrips, hence the timings may vary depending on the aircraft routing. • Passengers arriving Wilson in this service can connect to Vipingo, Ukunda, Amboseli / Tsavo in the afternoon.
MARA	WILSON	11:00	11:45	180	16	325	32	
WILSON	MARA	14:30	15:15	180	16	325	32	<ul style="list-style-type: none"> • Daily Service: Minimum 2 pax per airstrip 4 pax to operate; (all airstrips including Cottars & Siana) • The flight into the Masai Mara drops and picks passengers from multiple airstrips, hence the timings may vary depending on the aircraft routing.
MARA	WILSON	16:00	16:45	180	16	325	32	



Res@flyals.com / Booking@flyals.com / Marketing@flyals.com

Timings are East African time (EAT), For T & Cs visit www.flyals.com

Fares are subject to change by written notice



EMBRAER 135/145

Capacity : 50 Passengers
Crew : 2 Pilots 2 Flight attendants
Fleet : 9

DASH 8 - 300

Capacity : 50 Passengers
Crew : 2 Pilots 2 Flight attendants
Fleet : 3



BOMBARDIER (DASH 8-100/200)

Capacity : 37 Passengers
Crew : 2 Pilots 1 Flight Attendants
Fleet : 12



BEECHCRAFT 1900

Capacity : 19 Passengers
Crew : 2 Pilots
Fleet : 4



CESSNA CARAVAN

Capacity : 12 Passengers
Crew : 2 Pilots
Fleet : 6
VIP Caravan : 1

